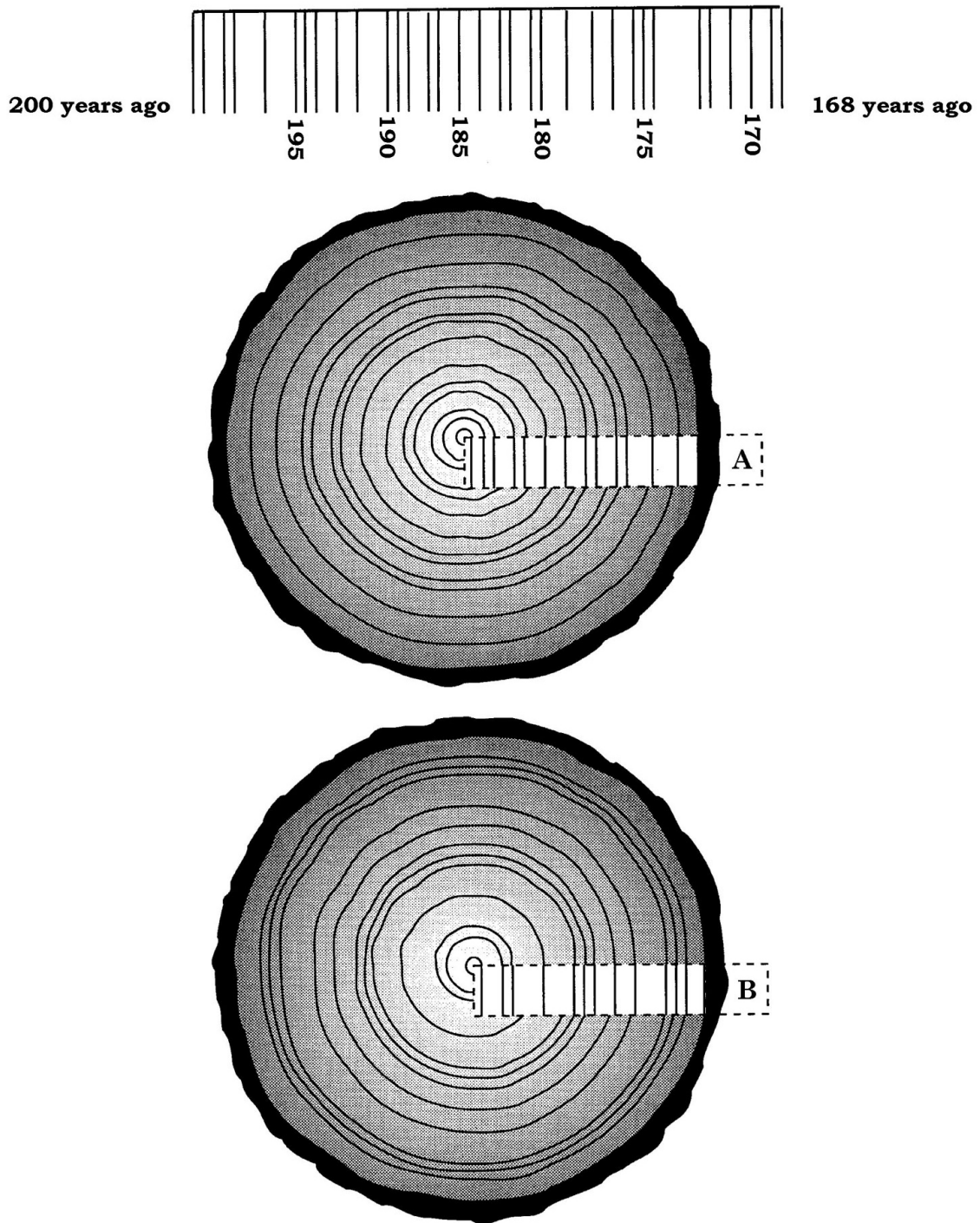


# Be a Dendrochronologist (page 1)



Adapted from Dendrochronology/Tree Rings worksheet © 1986, courtesy of Barbara Gronemann, Southwest Learning Systems. Dates changed to reflect North Carolina example.

## Be a Dendrochronologist (page 2)

Name:

1. What can a tree tell us? Name two things archaeologists can learn about a site from tree rings.
  
2. How is the tree-ring record affected if ancient people used wood beams from older sites when building new homes?
  
3. What happens to the archaeological record if someone removes a beam or even places it somewhere else on the site?
  
4. Refer to the diagram on page 1 of your activity sheet and answer the following questions:
  - Which beam is the oldest?
  - How old was Tree A when it was cut?
  - How many years ago did Tree A start growing?
  - How many years ago was Tree A cut?
  - For Tree A, list the number of dry cycles (two or more dry years).
  - For Tree A, list the number of wet cycles (two or more wet years).
  - How old was Tree B when it was cut?
  - How many years ago did Tree B start growing?
  - How many years ago was Tree B cut?
  - For Tree B, list the number of dry cycles (two or more dry years).
  - For Tree B, list the number of wet cycles (two or more wet years).
  
5. How might climatic changes have affected the lifeways of ancient people?